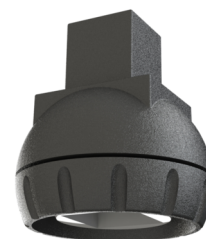




## Art.-Nr: AM-X-PKG-WS

Ball joint for all luminaires with square pendulum (OLED, A series) compensates slanted ceilings up to a slope of 23°. Thus, the exit signs can continue to be mounted according to legal standards and straight.

The practical ball joint is mounted between the pendulum and the ceiling mount of the luminaire. Available in the colors white, anthracite and stainless steel look.



[More information](#)



### TECHNICAL DATA

Depth	25 mm
Width	25 mm
Height	20 mm
Weight	0.04 kg
Customs tariff number	94059900
Country of origin	CHINA
EAN	4260659566760

stand: 21.06.2024 - Subject to technical changes and errors.