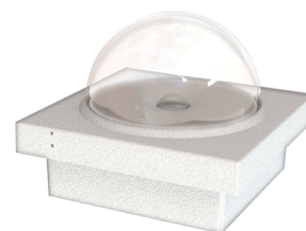




## Art.-Nr: IL-IK10-W

This housing keeps ILD luminaires protected, from dust, water and shock.

It covers the requirements of IP 65 as well as IK 10 and is ballproof according to DIN 18032.



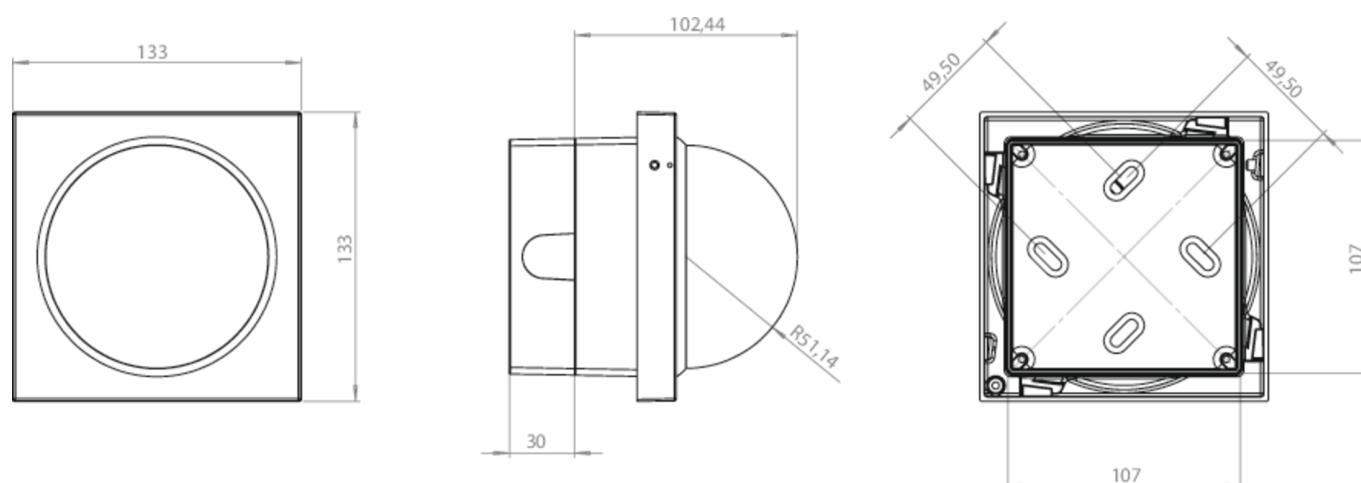
More information



### TECHNICAL DATA

Depth	133 mm
Width	133 mm
Height	132 mm
Weight	1.2 kg
Customs tariff number	94059900
Country of origin	DEUTSCHLAND

### TECHNICAL DRAWING



stand: 21.06.2024 - Subject to technical changes and errors.