



Art.-Nr: PMW403SC

Exit sign

Wall mounting, SelfControl (SC), 3 h, 20 m, IP65, Plastic, white

Plastic LED emergency exit sign luminaire with convex shaped surround for wall mounting.

To help with mounting, levelling screws are integrated to compensate for uneven surfaces.

The set of pictograms is inserted on the inside and secured without the use of solvents.

Automatic monitoring of safety luminaire with SelfControl. The set of pictograms (MTL, MTR and 2 straight arrows) is supplied as standard.



More information

www.rp-group.com/en/item/PMW403SC



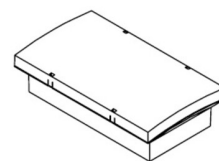
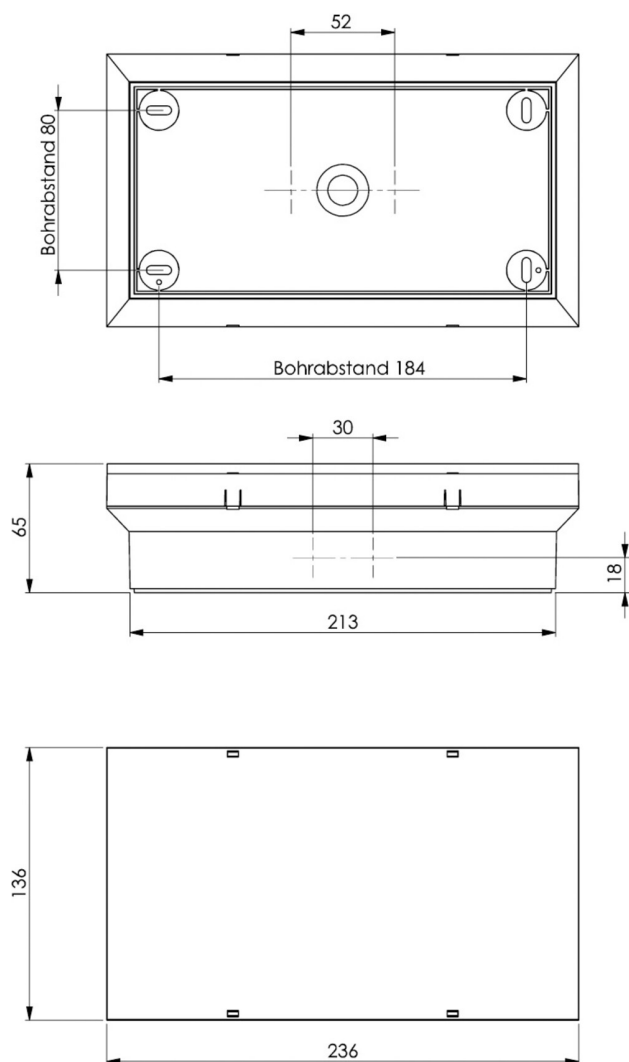
TECHNICAL DATA

Luminaire type	Exit sign
Mounting	Wall mounting
Recognition distance	20 m
Pictograph	Set
Illuminant	LED
Housing material	Plastic
Housing color	white
Protection type (IP)	IP65
Impact resistance (IK)	6
Certification	WEEE, CE, D-Sign
Insulation class	2
Monitoring	SelfControl (SC)
Bridging time	3 h
Battery	LiFePO4 6,4 V/1,6 Ah
Power max.	4,1 W
Power DS	3,3 W
Power BS	0,9 W
Ambient temperature DS	-5 °C - 40 °C



Ambient temperature BS	-5 °C - 40 °C
Depth	65 mm
Width	236 mm
Height	136 mm
Weight	0.7
Weight incl. packaging	0.83
Customs tariff number	94056120
EAN	4260766553660

TECHNICAL DRAWING





ACCESSORY LIST

LFP3216-SET-2AKKU - CS_VALUE_BatteryTechnology. Battery

As of: 11.10.2024 - Subject to technical changes and errors.