



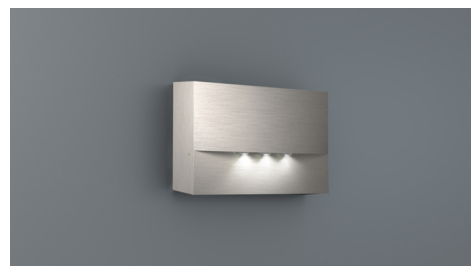
**Art.-Nr: WAF029ML-E**

**Safety luminaire Centralised power supply systems  
Wall mounting, Central power supply (ML), CPS, , IP20, Zinc  
die-cast, Stainless steel**

High-grade zinc die-cast safety luminaire for surface mounting on the wall.

The radiating characteristics run parallel to the wall to help perfectly illuminate escape and emergency routes.

Control and monitoring via central power supply system.



More information

[www.rp-group.com/en/item/WAF029ML-E](http://www.rp-group.com/en/item/WAF029ML-E)



**TECHNICAL DATA**

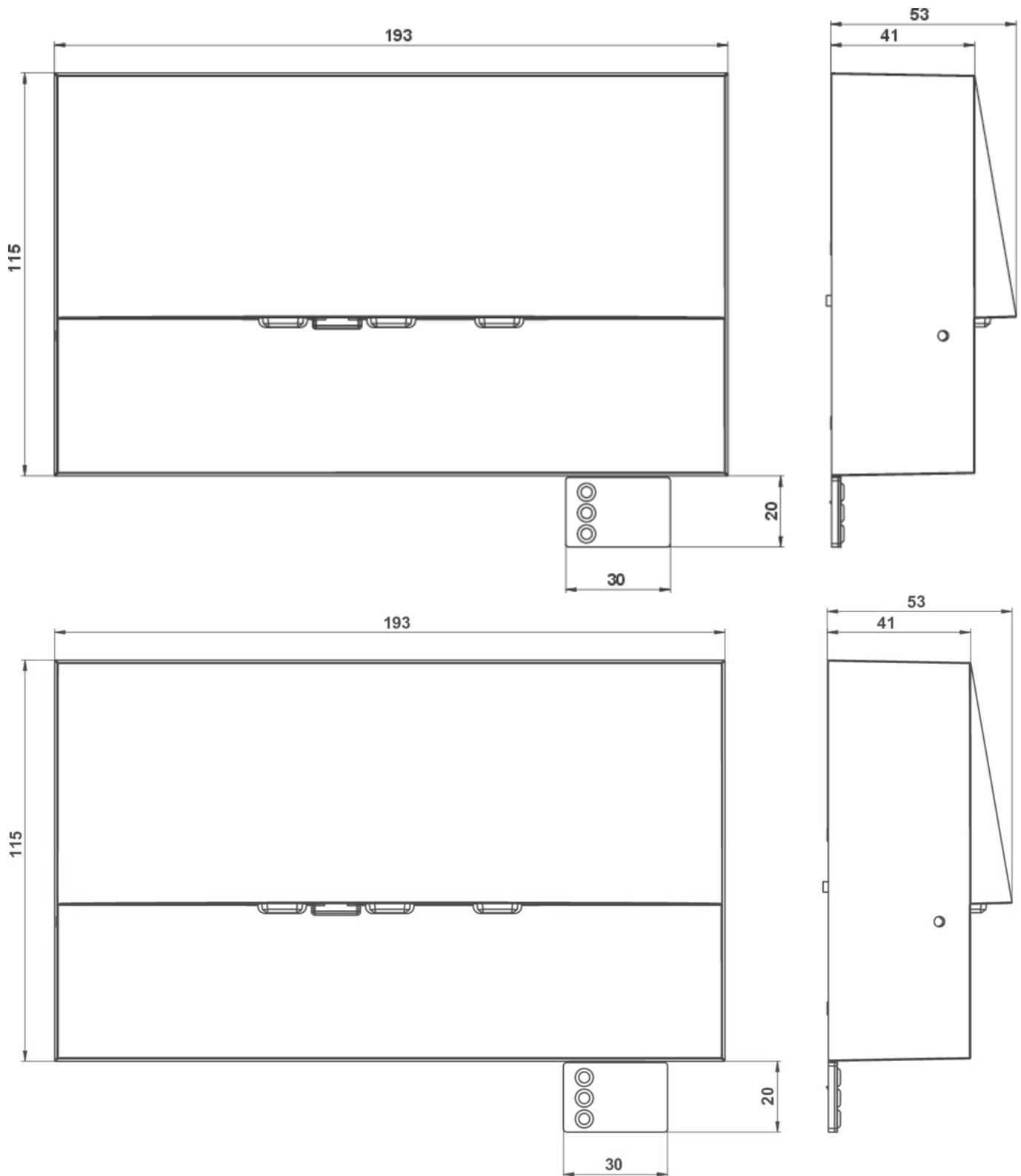
Luminaire type	Safety luminaire
Mounting	Wall mounting
Pictograph	No
Illuminant	LED
Housing material	Zinc die-cast
Housing color	Stainless steel
Protection type (IP)	IP20
Impact resistance (IK)	4
Certification	WEEE, CE
Insulation class	2
Supply	Centralised power supply systems
Monitoring	Central power supply (ML)
Bridging time	CPS
Battery	/
Operating mode	single luminaire switching
Input voltage AC	230 V
Input frequency	50 / 60 Hz
Input voltage DC	216 V
Power max.	4,5 W
Power DS	4,5 W
Power BS	1,1 W



Ambient temperature DS	-20 °C - 35 °C
Ambient temperature BS	-20 °C - 40 °C
Depth	53 mm
Width	193 mm
Height	115 mm
Weight	0.07
Weight incl. packaging	0.1
Connection cross-section	2.5 mm <sup>2</sup>
Switching input	Yes
Emergency light blocking	No
Battery connection	No
Dimming function	Yes
Luminous flux mains	420 lm
Luminous flux emergency	420 lm
Customs tariff number	94056180
EAN	4260581712891



TECHNICAL DRAWING



As of: 11.10.2024 - Subject to technical changes and errors.