

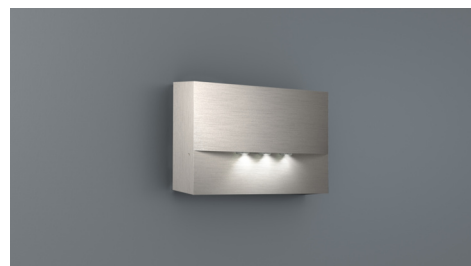


Art.-Nr: WAF428WL-E
Safety luminaire Single Battery
Wall mounting, Wireless Professional (WL), 8 h, , IP20, Zinc die-cast, Stainless steel

High-grade zinc die-cast safety luminaire for surface mounting on the wall.

The radiating characteristics run parallel to the wall to help perfectly illuminate escape and emergency routes.

Wireless central control and monitoring for large installations of up to 50,000 luminaires with Wireless Professional.



More information

www.rp-group.com/en/item/WAF428WL-E



TECHNICAL DATA

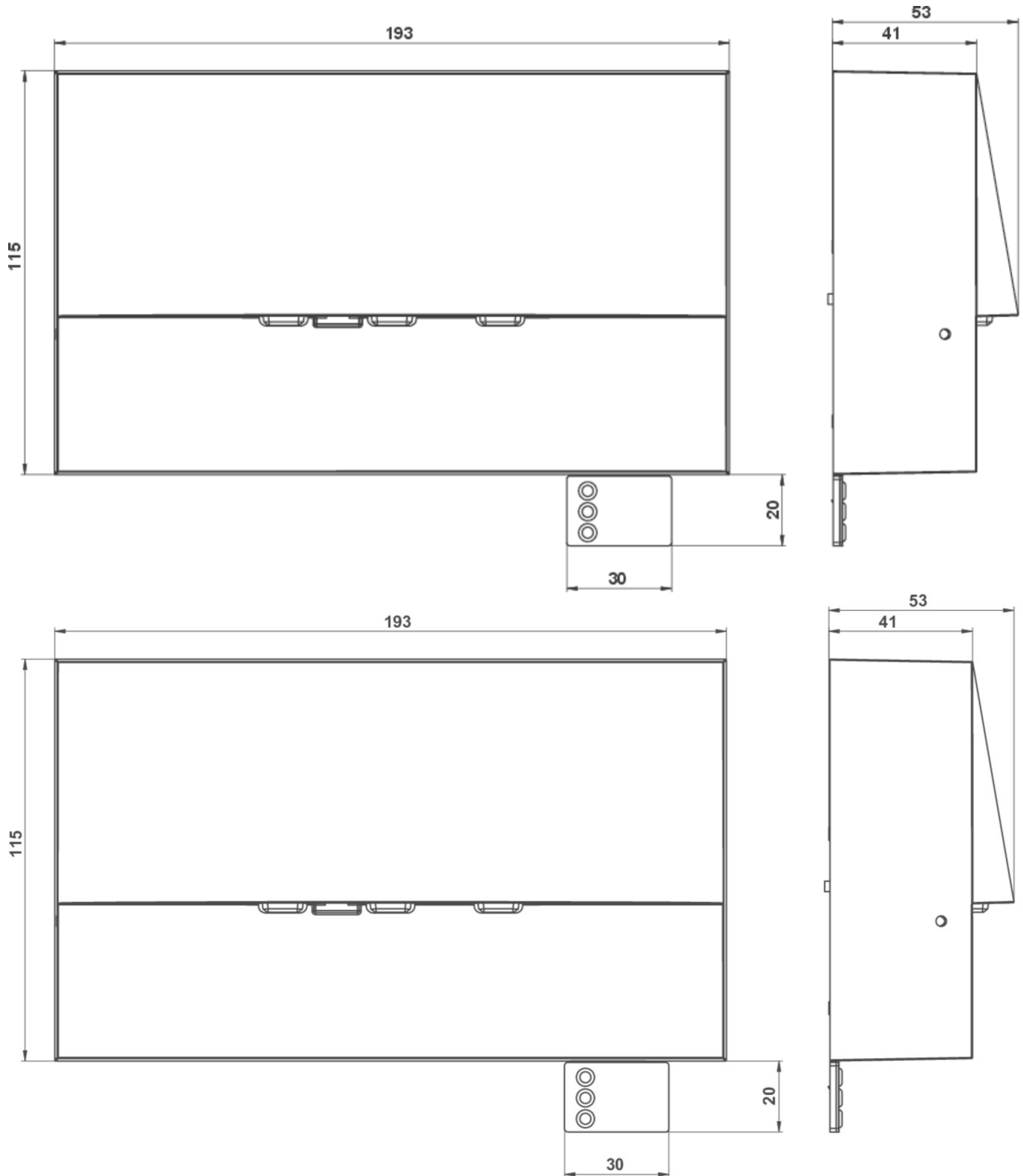
Luminaire type	Safety luminaire
Mounting	Wall mounting
Pictograph	No
Illuminant	LED
Housing material	Zinc die-cast
Housing color	Stainless steel
Protection type (IP)	IP20
Impact resistance (IK)	4
Certification	WEEE, CE
Insulation class	2
Supply	Single Battery
Monitoring	Wireless Professional (WL)
Bridging time	8 h
Battery	LiFePO4 6,4 V/1,2 Ah
Operating mode	Standby circuit / permanent circuit
Input voltageAC	230 V
Input frequency	50 Hz
Power max.	5,1 W
Power DS	3,9 W
Power BS	0,8 W



Ambient temperature DS	-5 °C - 35 °C
Ambient temperature BS	-5 °C - 40 °C
Depth	53 mm
Width	193 mm
Height	115 mm
Weight	0.22
Weight incl. packaging	0.25
Connection cross-section	2.5 mm ²
Switching input	Yes
Emergency light blocking	Yes
Battery connection	Connector
Dimming function	Yes
Luminous flux mains	470 lm
Luminous flux emergency	75 lm
Customs tariff number	94056180
EAN	4260766551963



TECHNICAL DRAWING



As of: 11.10.2024 - Subject to technical changes and errors.