



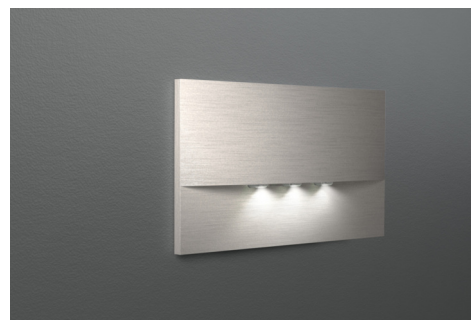
**Art.-Nr: WEF421SC-E**

**Safety luminaire**

**Recessed wall mounting, SelfControl, , , IP20, Zinc die-cast, Stainless steel**

LED emergency luminaire for wall installation and for the lighting of escape and rescue routes according to DIN EN 60598-1, DIN EN 60598-2-22 and DIN EN 1838. The discreet recessed luminaire is designed for installation in conventional double jacks. The mounting frame can be aligned with the jack. The zinc-aluminum cover is attached without externally visible fastening. Through the status LED which is incorporated in the lens the harmony of the housing is not interrupted.

Automatic monitoring of the emergency light with SelfControl.



More information

[www.rp-group.com/en/item/WEF421SC-E](http://www.rp-group.com/en/item/WEF421SC-E)



**TECHNICAL DATA**

Luminaire type	Safety luminaire
Mounting	Recessed wall mounting
Pictograph	No
Housing material	Zinc die-cast
Housing color	Stainless steel
Protection type (IP)	IP20
Impact resistance (IK)	7
Certification	WEEE, CE
Insulation class	2
Monitoring	SelfControl
Battery	/
Ambient temperature DS	-5 °C - 40 °C
Ambient temperature BS	-5 °C - 40 °C
Depth	20 mm
Width	161 mm
Height	107 mm
Installation length	155 mm
Installation width	82 mm



Installation height	70 mm
Weight	0.41
Weight incl. packaging	0.44
Customs tariff number	94056180
EAN	4260766556715



## TECHNICAL DRAWING





## ACCESSORY LIST

LFP3216-SET-2AKKU - Technology Battery

As of: 04.09.2024 - Subject to technical changes and errors.